



# Kratz Homes

BUILDING FOR REGINA FAMILIES FOR OVER 45 YEARS



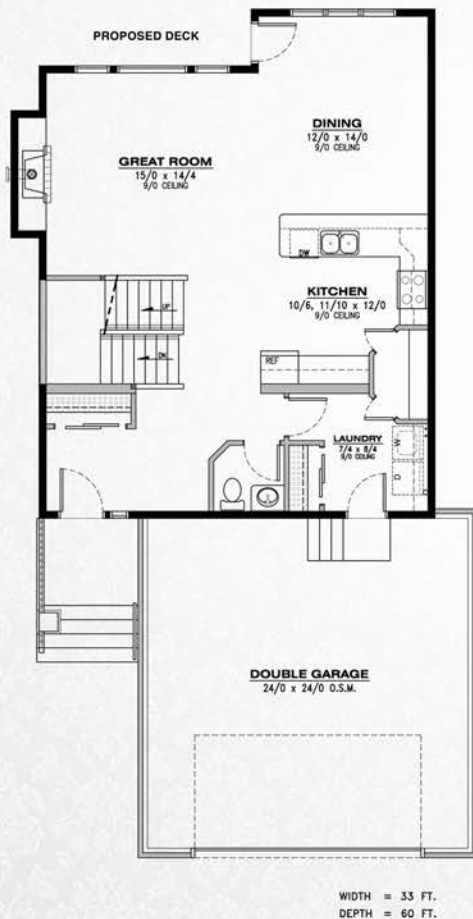
*The Pasqua*

# The Pasqua

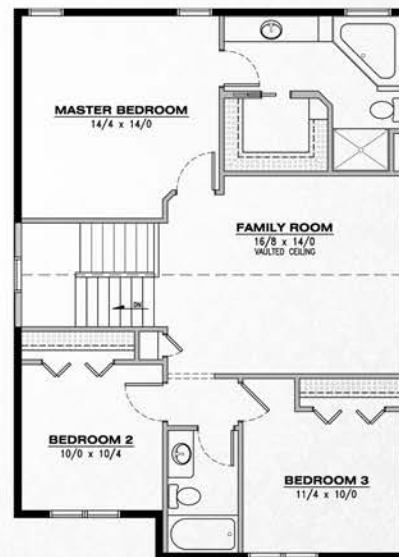
## The Pasqua

2028 sq ft.  
Two-Storey

- Main floor plan with open concept. With 9ft ceilings
- Large pantry in kitchen
- Large custom kitchen features quartz countertop
- Quartz countertops throughout bathrooms
- Open foyer
- Main floor laundry
- Natural Gas fireplace in living room
- Garage fully insulated & drywalled
- 2nd floor features 3 large bedrooms
- Luxurious master ensuite with heated tile, separate shower and corner jet tub
- Boasts spacious bonus room on 2nd level separating Master bedroom from 2nd & 3rd bedrooms
- Air conditioning, Air to Air exchanger & humidifier included



Main – 966 sq.ft.



Upper – 1062 sq.ft.

[www.kratzhomes.com](http://www.kratzhomes.com)

The design is published by Kratz Homes Ltd. and is subject to change without notice. All rights reserved including the right of reproduction in whole or in part in any form. Kratz Homes Ltd. reserves the right to change specification and plan without notice, however guarantees that changes will be of equal or greater value. Room dimensions are approximate. Publishing date: June 1, 2011

2303 East Emmett Hall Rd  
Regina, SK S4N 2Y3

Call: (306) 737-1912 (Dawn)  
dawn@kratzhomes.com