



# Kratz Homes

BUILDING FOR REGINA FAMILIES FOR OVER 45 YEARS



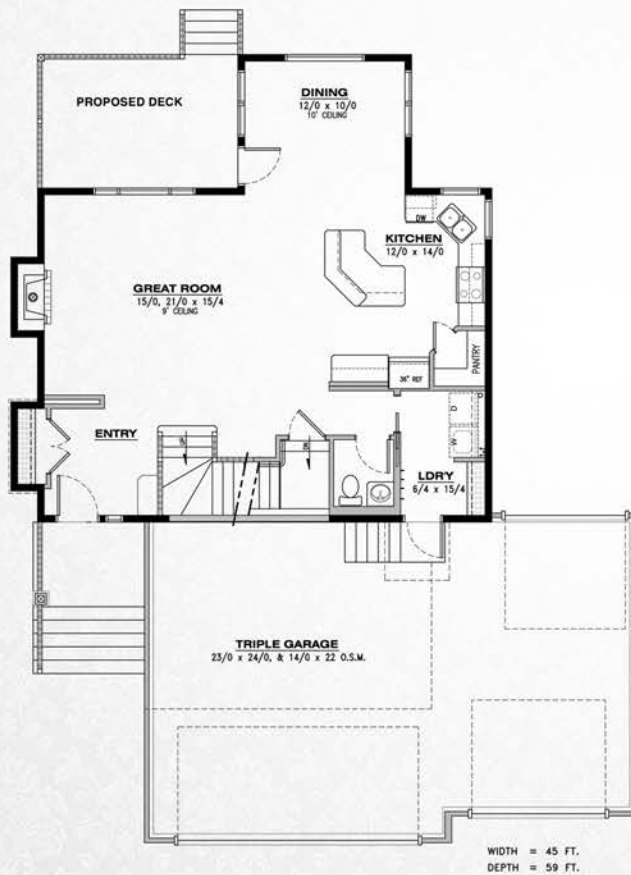
*The Kenosee*

# The Kenosee

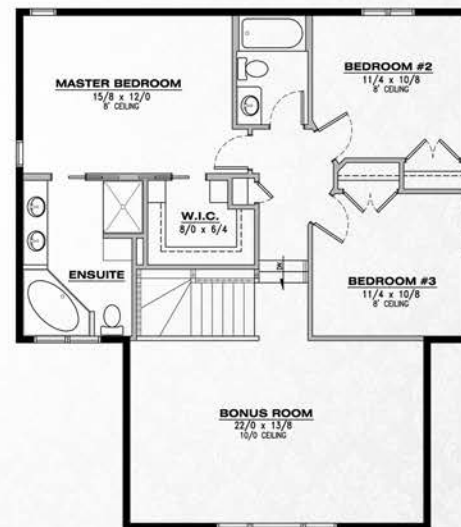
## The Kenosee

2114 sq ft.  
Two-Storey

- Beautiful and bright main floor plan with open concept. With 9ft ceilings
- 10 ft ceiling in dining area
- Large pantry in kitchen
- Large custom kitchen features quartz countertop
- Large eating area surrounded by windows off of kitchen
- Quartz countertops throughout bathrooms
- Open foyer
- Main floor laundry
- Natural Gas fireplace in living room
- Garage fully insulated & drywalled
- 2nd floor features 3 large bedrooms
- Luxurious master ensuite with heated tile, his & her sinks, separate shower and corner jet tub
- Boasts spacious bonus room on 2nd level
- Air conditioning, Air to Air exchanger & humidifier included



Main – 993 sq.ft.



Upper – 1121 sq.ft.

[www.kratzhomes.com](http://www.kratzhomes.com)

The design is published by Kratz Homes Ltd. and is subject to change without notice. All rights reserved including the right of reproduction in whole or in part in any form. Kratz Homes Ltd. reserves the right to change specification and plan without notice, however guarantees that changes will be of equal or greater value. Room dimensions are approximate. Publishing date: June 1, 2011

2303 East Emmett Hall Rd  
Regina, SK S4N 2Y3

Call: (306) 737-1912 (Dawn)  
dawn@kratzhomes.com